



Use of District Resources

Goals
Funding Sources
DLR Group
Architecture Engineering Planning Interiors
Communication

Cooperation

Tradition

Fundraising
Learning Environment

High Standards
Accountability

NORTHWEST PUBLIC SCHOOLS FACILITY AUDIT & MASTER PLAN STUDY
MEETING # 2 – CHAPMAN SCHOOL

Student Centered Learning

Agenda

FACILITY AUDIT & MASTER PLAN STUDY

Review Roles, Goals & Objectives

Current Open Enrollment

Chapman Elementary & Middle School Review

Existing Facility Site Plan & Floor Plan
Educational Space Program Summary
Physical Plant Assessment Summary

Middle School Concept

Middle School vs Elementary School
Middle School vs Junior High
Middle School vs High School

Potential Solutions Discussion

Educational Space Program Summary
Conceptual Site Plans & Floor Plans

Small Group Discussion

Polling Questions

Future Meeting Dates



Roles, Goals & Objectives

FACILITY AUDIT & MASTER PLAN STUDY

ROLES

- **DLR Group – Facilitators & Planning Expertise**
- **District Administration & Staff – Education Leadership & Expertise**
- **School Board – Strategic & Financial Decision Making Responsibility**
- **District Patrons & Parents - Stakeholders & Taxpayers**

GOALS

- **Establish a Long Term Vision for the Northwest School District's:**
 - Educational Program Needs
 - Facility Improvement Needs
- **Be Good Stewards of the School District's Financial Resources**
- **Determine Implementation Plan of Master Plan**

OBJECTIVES

- **Evaluate Current Educational Program offering & space requirements**
- **Establish an understanding of the condition of the districts' existing facilities**
- **Evaluate Facility Utilization Options**
- **Evaluate Cost & Tax Impact of Potential Solutions**

OUR GUIDING PRINCIPLE:

To Achieve Consensus Through Informed Consent



Northwest Enrollment – School Year 2016-17

FACILITY AUDIT & MASTER PLAN STUDY

Grade	Total	Option In Students	District Students
K	82	47	35
1	68	40	28
2	71	37	34
3	82	43	39
4	77	33	44
5	81	37	44
6	75	44	31
7	75	40	35
8	73	33	40
9	190	149	41
10	161	127	34
11	182	142	40
12	191	141	50
Total	1408	913	495

Northwest Option In / Option Out Enrollment – School Year 2016-17

FACILITY AUDIT & MASTER PLAN STUDY

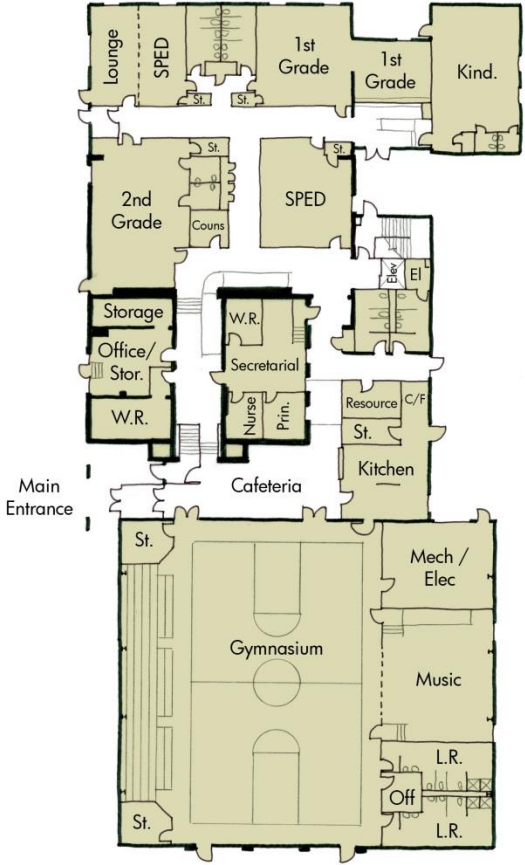
	K	1	2	3	4	5	6	7	8	9	10	11	12	Total
Aurora														
Option In	2				1	1	2		1	2	1		1	11
Option Out														0
Central City														
Option In	1	1				1		1		1	1	1		7
Option Out				1				1		1		1	1	5
Central Valley														
Option In														0
Option Out											1			1
Centura														
Option In	1	1					1	1		1	1	3	1	10
Option Out		2		1	2		1			1	2	2		11
Doniphan														
Option In				1			1			1	1	1		5
Option Out									1	1	1			3
Grand Island														
Option In	40	37	36	36	28	33	36	37	31	139	121	133	132	839
Option Out	7	10	10	10	12	9	13	16	8	10	12	7	15	139
Palmer														
Option In													1	1
Option Out			2	1	1	2	1	4	3	2	6	2	1	25
St Paul														
Option In	1	1	1	4	1	1						1	2	12
Option Out			1		1	1	2	4	3	2	1	5	1	21
Wood River														
Option In	2			2	3	1	4	1	1	5	2	3	4	28
Option Out						1		1						2
Total														
Option In	47	40	37	43	33	37	44	40	33	149	127	142	141	913
Option Out	7	12	13	13	16	13	17	26	15	17	23	17	18	207
Net	40	28	24	30	17	24	27	14	18	132	104	125	123	706

Existing Facility Site Plans & Floor Plans

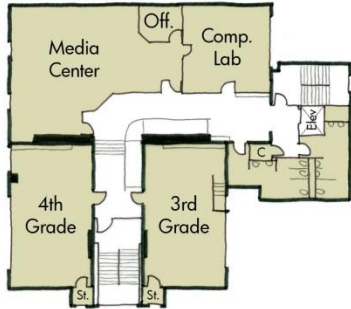
FACILITY AUDIT & MASTER PLAN STUDY



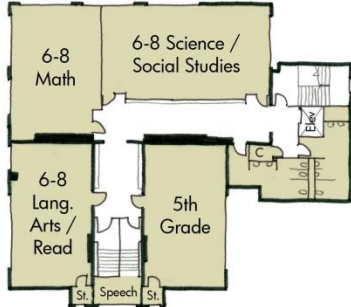
Site Plan



1st Floor



2nd Floor



3rd Floor



Floor Plans

Educational Space Program Summary

FACILITY AUDIT & MASTER PLAN STUDY

Chapman Elementary / Middle School

Deficiencies

- Site size limits expansion options
- Program equity: Class sizes at Cedar Hollow are larger than any of the other schools
- Lack of Middle School exploratory program
- No art program
- Lack of meeting / conference / storage / workroom spaces
- Lack of SPED support spaces
- Toilet facilities – potential updates per code
- Music room lacks support spaces
- Cafeteria is small
- Lack of science support spaces
- Lack of media center support spaces

Positives

- Multiple floors helps to segregate grade levels
- Gymnasium the best compared to the other Elem/MS buildings
- The building has an elevator and most rooms are ADA accessible
- Has a functional gym/stage relationship
- The kitchen is the best compared to the other Elem/MS buildings

Physical Plant Assessment Summary



Chapman Elementary / Middle School

Civil

- Need to seal crack in concrete paving
- Need to fill gravel lot to eliminate pot holes
- Sidewalk on the south side needs to be resealed
- Need to remove leaves and debris from trench drains
- Remove gravel from valley gutter

Architecture

- Toilet facilities will need to be updated per code
- Some deteriorated sealant at grade
- Some downspout repair needed
- New windows needed in at least 6 locations
- Exterior masonry structural repair needed in at least 1 location
- Exterior painting needed in select locations
- Need new spandrel window panels at 2 locations
- New carpet needed in at least 19 rooms
- Damaged tile flooring in at least 2 rooms
- Damaged ceiling tiles in at least 4 rooms
- ADA updates needed on at least 3 doors
- Partition wall showing wear
- Dated casework in at least 2 locations
- Some repair on casework needed
- All toilet partitions should be replaced
- Sinks should be replaced in at least 1 room

Mechanical

- No fire sprinkler system
- Many of the HVAC units are nearing the end of their life
- As units are replaced, they should replace them with non-ozone depleting HFC refrigerants

Electrical

- Video surveillance should be replaced
- There is only one location of access control
- Should consider replacing interior fixtures and controls
- Need to replace the gymnasium lights
- Replace all exit signs
- If area lighting is a concern, replace with new fixtures
- Long range plan should include upgrades to CAT 6A cabling
- Should replace the intercom head end system
- The fire alarm system should be replaced with any new project
- Should consider providing smart boards

Middle School vs Elementary School

FACILITY AUDIT & MASTER PLAN STUDY

Students in middle school have different instructional, social and emotional needs than students in elementary and high school settings. It is important to address these needs in a way that is most beneficial to the students.

Middle School

- Grade level teacher team focus
- More student mobility
- Opportunity for more flexibility in lunch program
- Incorporates elective classes
- Athletics
- Student interacts with multiple teachers
- Student input on decisions
- More student responsibility / independence expected
- Personality is becoming more developed

Elementary School

- Individual classroom teacher is the focus
- Less student mobility
- Lunch program is regimented
- Set schedule / structured format
- Recess

Middle School vs Junior High School

FACILITY AUDIT & MASTER PLAN STUDY

Students in middle school have different instructional, social and emotional needs than students in elementary and high school settings. It is important to address these needs in a way that is most beneficial to the students.

Middle School

- Typically 6th-8th grades or 5th-8th grades
- Main focus is student interest and need
- Student focused
- Cognitive & affective development + emotional & personality formation
- Stresses student achievement, independence and flexibility
- Grade level teaming
- Thematic curriculum
- Empowers teachers
- Block scheduling with a common plan time for teachers
- Stresses teacher collaboration and student/teacher interaction
- Can foster a more social environment

Junior High School

- Typically 7th-8th grades or 7th-9th grades
- Main focus is to get them ready for high school
- Subject focused
- Cognitive, memory and information processing
- Arranged by department
- More lecture focused – teacher talk time
- Empowers administrators
- Schedules look like a high school schedule
- Can foster a more segregated environment

Middle School vs High School

FACILITY AUDIT & MASTER PLAN STUDY

Students in middle school have different instructional, social and emotional needs than students in elementary and high school settings. It is important to address these needs in a way that is most beneficial to the students.

Middle School

- Typically a smaller facility (3 grades)
- Students have some choice in their classes / schedule
- Some athletic / extra curricular activities are present
- More nurturing environment

High School

- Typically a larger facility (4 grades)
- Student per class numbers are typically higher
- Workload increases
- Students have more choice in their classes / schedule
- Student interacts with more teachers on a day to day basis
- Athletics / extra curricular activities become more important
- Student independence at its highest
- Peer pressure will be at its highest

Potential Solutions Discussion

FACILITY AUDIT & MASTER PLAN STUDY

Option A:

- Fix what you have and maintain all six buildings

Option B:

- Convert one of the buildings into a Middle School and consolidate the other Elementary Schools

Option C:

- Construct a new free standing Middle School on the High School site

Other Options?



Educational Space Program Summary

FACILITY AUDIT & MASTER PLAN STUDY

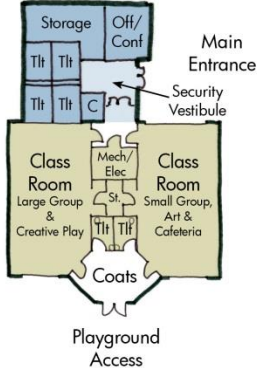
	Proposed Square Footage	Existing Square Footage	Deficiency
Lockwood Pre-School	3,466 sf	2,570 sf	896 sf
Cedar Hollow Elem. / M.S.	65,014 sf	48,815 sf	16,199 sf
Chapman Elem. / M.S.	57,700 sf	33,615 sf	24,085 sf
One-R Elem. / M.S.	46,799 sf	24,360 sf	22,439 sf
St. Libory Elem. / M.S.	47,048 sf	22,885 sf	24,163 sf
Northwest High School	206,906 sf	196,265 sf	10,641 sf
Totals	426,933 sf	328,510 sf	98,423 sf

Conceptual Site Plans & Floor Plans

FACILITY AUDIT & MASTER PLAN STUDY



Site Plan



Floor Plan



Option A: Maintain Existing Buildings: PK Concept

Conceptual Site Plans & Floor Plans

FACILITY AUDIT & MASTER PLAN STUDY



Option A: Maintain Existing Buildings: K-8 Concept

Conceptual Site Plans & Floor Plans

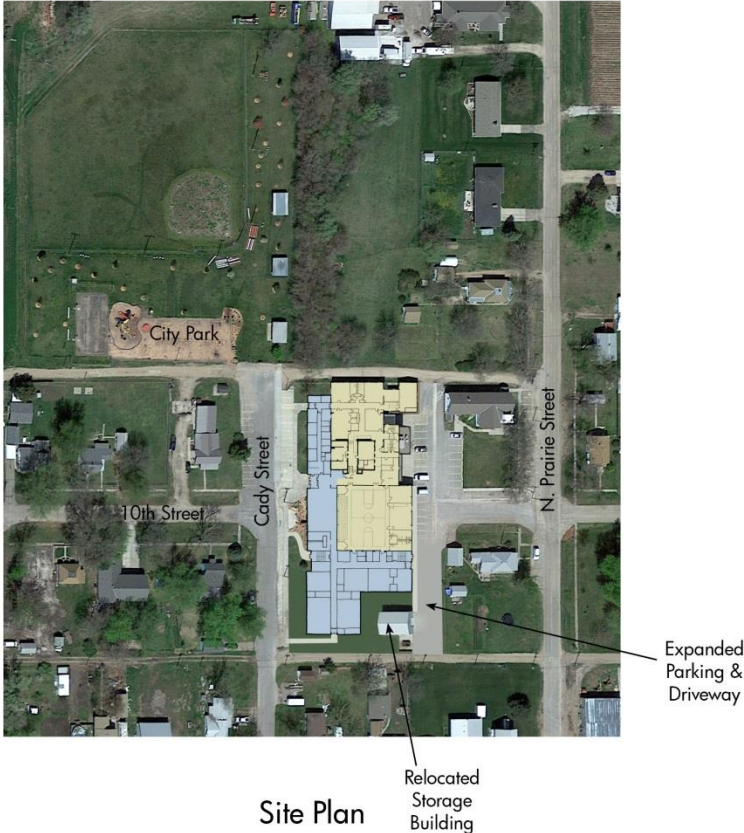
FACILITY AUDIT & MASTER PLAN STUDY



Option A: Maintain Existing Buildings: K-8 Concept

Conceptual Site Plans & Floor Plans

FACILITY AUDIT & MASTER PLAN STUDY



Site Plan

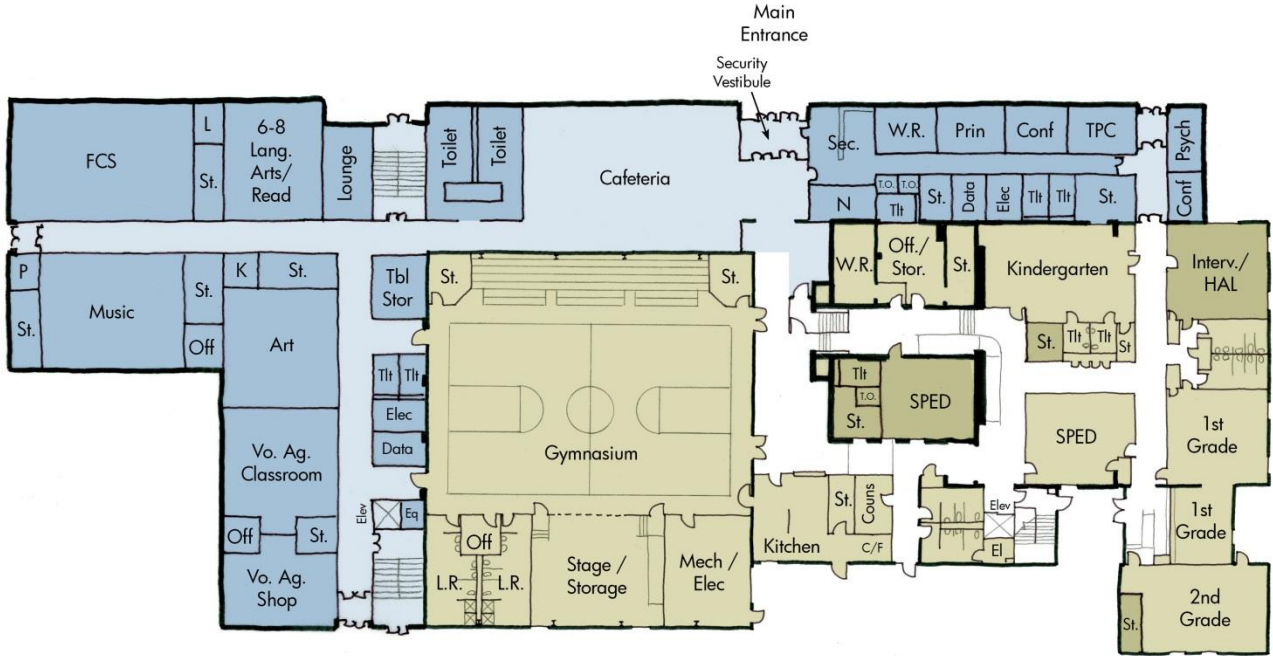
Relocated
Storage
Building

Expanded
Parking &
Driveway

Option A: Maintain Existing Buildings: K-8 Concept

Conceptual Site Plans & Floor Plans

FACILITY AUDIT & MASTER PLAN STUDY



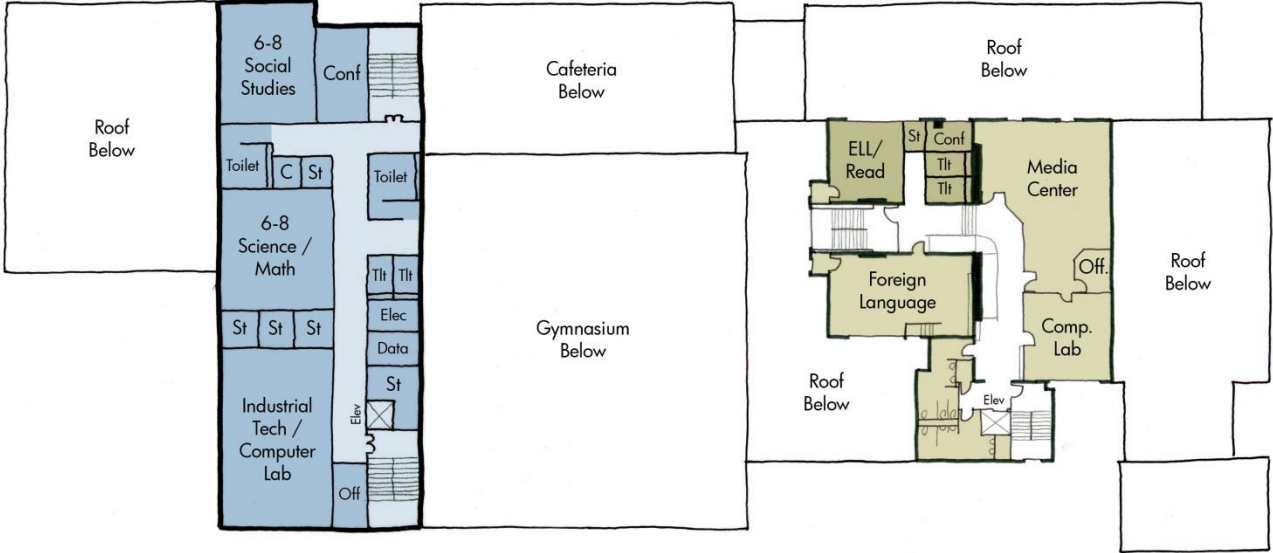
1st Floor Plan



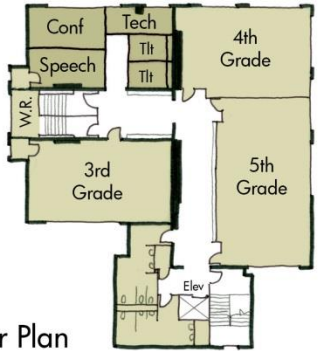
Option A: Maintain Existing Buildings: K-8 Concept

Conceptual Site Plans & Floor Plans

FACILITY AUDIT & MASTER PLAN STUDY



2nd Floor Plan



3rd Floor Plan



Option A: Maintain Existing Buildings: K-8 Concept

Conceptual Site Plans & Floor Plans

FACILITY AUDIT & MASTER PLAN STUDY



Site Plan



Floor Plan



Option A: Maintain Existing Buildings: K-8 Concept

Conceptual Site Plans & Floor Plans

FACILITY AUDIT & MASTER PLAN STUDY



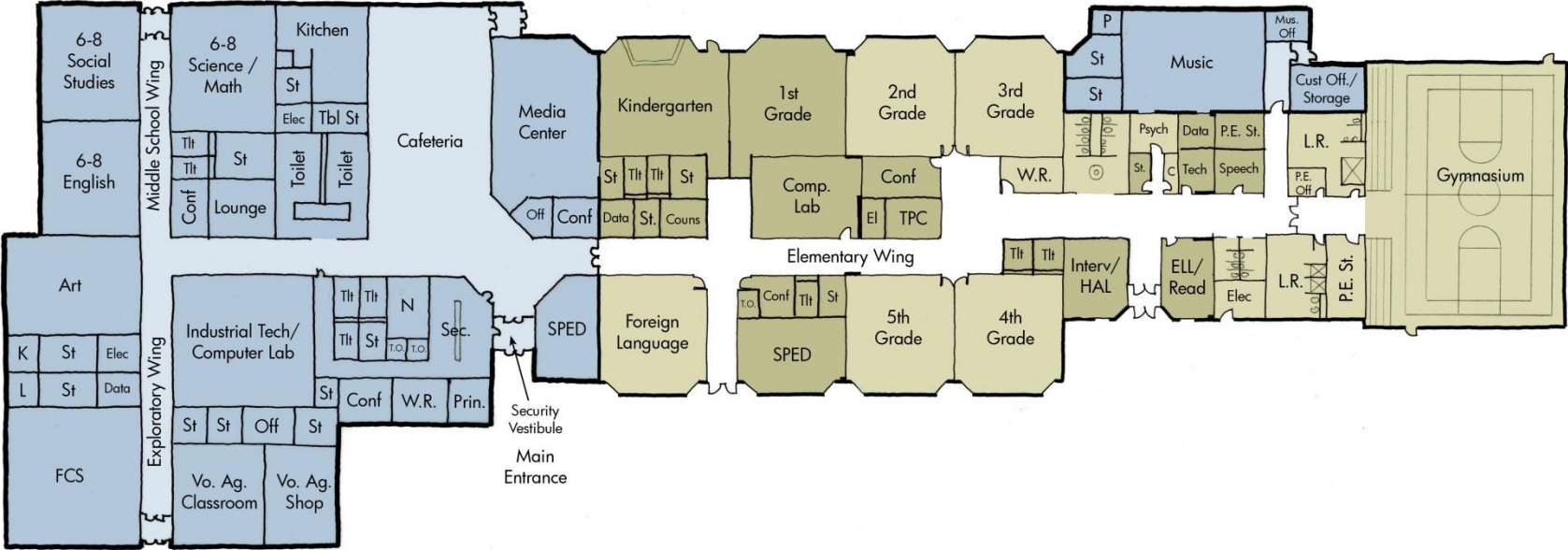
Site Plan



Option A: Maintain Existing Buildings: K-8 Concept

Conceptual Site Plans & Floor Plans

FACILITY AUDIT & MASTER PLAN STUDY



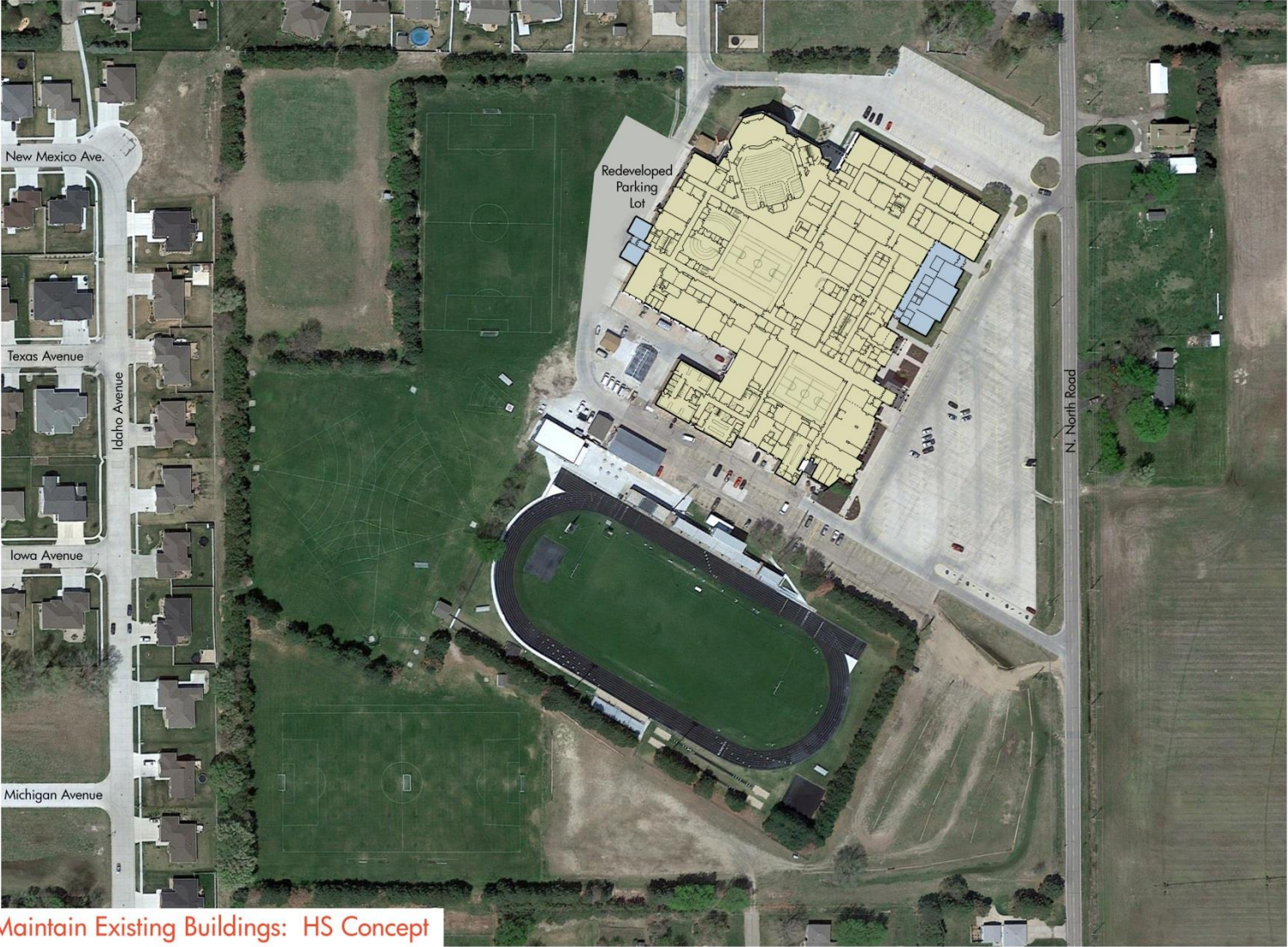
Floor Plan



Option A: Maintain Existing Buildings: K-8 Concept

Conceptual Site Plans & Floor Plans

FACILITY AUDIT & MASTER PLAN STUDY



Option A: Maintain Existing Buildings: HS Concept

Conceptual Site Plans & Floor Plans

FACILITY AUDIT & MASTER PLAN STUDY



Option A:
Maintain Existing Buildings:
HS Concept



Small Group Discussion

FACILITY AUDIT & MASTER PLAN STUDY

Diversity of Groups

Questions to Discuss & Consider

1. Do you agree that the Northwest School District has too many separate buildings for the number of students being served?
2. Do you agree that the Northwest School District needs to find ways to operate more efficiently?
3. Do you agree that Northwest School District should find ways to achieve more equality in class sizes ?
4. Do you agree that the Northwest School District should solve the class size issue by consolidating into fewer buildings ?
5. Should the Northwest School District seek to enhance its Middle School program to benefit the Northwest students?
6. Do you believe that an enhanced Middle School program would help to retain Northwest resident students?
7. Should the Middle School program be located in a single location instead of spread out between four locations?

Straw Poll



Future Meeting Dates

FACILITY AUDIT & MASTER PLAN STUDY

Tentative Planning Meeting Overview

Meeting # 1 – September 28th – Cedar Hollow
Master Plan Process Overview & General Discussion of Issues

Meeting # 2 - October 11th – Chapman School
Review Educational Program & Physical Plant Needs
Develop & Discuss Solution Options

Meeting # 3 - October 20th – 1-R School
District Financial Overview
Solution Cost Options

Meeting # 4 – October 27th – St. Libory School
Discussion & Consensus Building

Meeting #5 – TBD if Needed

Additional / Future meetings as required TBD





QUESTIONS?